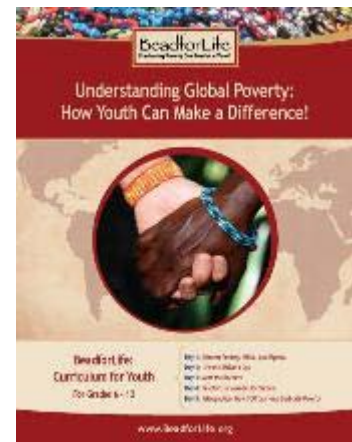


Fundraising with BeadforLife Curriculum

Host a BeadParty: Raise \$ for Uganda AND Your School or Community



Here's how it works:

Purchase/download BeadforLife's five-day service learning curriculum and use it in your classroom, with your faith-based youth groups, scout troops, etc.

Students will use hands-on activities, simulations, and discussions to better understand global poverty and ways they can take concrete actions to help.

In the **Take Action** section of the curriculum students will learn about how they can help eradicate poverty locally and globally. They will plan and execute actions that have an immediate effect on extreme poverty. One of the options presented is to host a BeadforLife BeadParty and raise funds for the organization of your choice. **After you host your BeadParty you will receive a donation check for 20% of funds raised at your BeadParty.**

Hosting a BeadParty is fun and easy. BeadforLife will support you every step of the way. You will receive a box of BeadforLife beads and other items, along with African recipes, an African music CD and much more at no cost to you!

Once you have been approved to host a fundraiser take the following steps to get started:

- Register online for your BeadParty using the promo code given to you.
- Email or Fax us a W-9 for tax purposes. Your school/organization will be able to provide this for you. Email to education@beadforlife or fax: 303-444-0462. Please note that we will not be able to issue a donation check without this document.
- Host your BeadParty and receive 20% back. (Ex. raise \$1000 and you will receive a check for \$200 to donate to your school or the organization of your choice)
- Return your BeadParty package to BeadforLife within the specified time frame.
- Receive your donation check in approximately 4 weeks from the date your BeadParty return is received.
- Donate your money to the organization of your choice!
- Complete a quick survey about your experience.

If you and your students would like to host a Fundraising with Curriculum BeadParty email Patty Manwaring at: education@beadforlife.org to tell us a little about your plans to use the curriculum and how you will incorporate your BeadParty.